



IMPACT PULVERIZER

AUTO SUCTION HAMMER MILL

HAMMER MILL

BOTTOM DISCHARGE HAMMER MILL

SPICE MILL

POUNDING MACHINE

FOUR HAMMER POUNDING MACHINE

DRY & WET PULVERIZER



WET PULVERIZER

MINI PULVERIZER

JACKETED MINI PULVERIZER

BLACK PEPPER DAL MAKING MACHINE

MULTI CAMBER PULVERIZER

MINI DAL MILL

EMERY SCOURER

DAL POLISHER



VIBRO SREEN

CENTRIFUGAL SIEVES / SIFTER

RIBBON BLENDER

SINGLE PADDLE MIXER 'U' TYPE

DOUGH KNEADER

SEMI AUTOMATIC CHAPATI MAKING M/C

RAW CHAPATI MAKING MACHINE

AUTOMATIC CHAPATI MAKING MACHINE



NOODLE MAKING MACHINE

NOODSLE STEAMING MACHINE

ECONOMIC STEAMER

IDLI DHOKLA MOMOS STEAMER

SHEVAYA MACHINE

VERMICELLI MAKING MACHINE

TRAY DRYER DRYING OVEN

VEGETABLE PEELER



POTATO CHIPS CRISPS MAKING MACHINE

HAND OPERATED POTATO CHIPS MAKING MACHINE

FRENCH FRY MAKING MACHINE

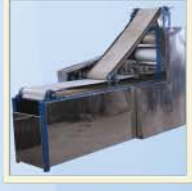
BANANA WAFER MACHINE

RECTANGULAR FRYER

CIRCULAR BATCH FRYER

CONTINUOUS FRYER

COATING PAN



MKEEN MAKING MACHINE

CENTRIFUGAL DRYER MACHINE

DOUGH KNEADER WITH EXTRUDER

PAPAD MAKING MACHINE

CONTINUOUS PAPAD DRYER

PANI PURI MAKING MACHINE

ECONOMIC MIXER GRINDER BLENDER

MIXER GRINDER BLENDER



STIRRER

MULTIPURPOSE VEGETABLE CUTTER

VEGETABLE SLICER, DICER, GREATER

GREEN CHILL ONION CHOPPER

DRY FRUIT TUKDA MACHINE

DRY FRUITS CHIPS MAKING MACHINE

DRY FRUITS CHIPS MAKING M/C WITH MOTOR

MULTIPURPOSE DRY FRU CHIPS & POWDER MACHIN



CENTRIFUGAL JUICER

MASTICATING JUICER

VEGETABLE & FRUIT PULPER

HOT BEVERAGE VENDING MACHINES

Jas ENTERPRISES

AN ISO 9001:2008 CERTIFIED COMPANY

60, SHREENATHJI ESTATE, PANNA ESTATE ROAD, RAKHIAL, AHMEDABAD, GUJARAT - 380025, INDIA
TELEPHONE: +(91)-(79)-22745454 FAX: +(91)-(79)-22745062 GSM: +(91)-9427417384- 9426068680

URL: <http://www.jasenterprise.com/>
E mail: info@jasenterprise.com & jasparvan1990@gmail.com

DE TO CONTINUOUS IMPROVEMENTS, WE RESERVE THE RIGHTS TO ALTER AND OR AMEND DIMENSIONS DESIGN WITHOUT PRIOR NOTICE.

JACKETED MINI PULVERIZER



Jacketed Mini Pulverizers, conventional in design, has its own advantages for various applications. A build-in water circulation jacket retains grinding temperature lower than otherwise. Design provides for admitting extra air during grinding to facilitate cool operation. Soft to medium hard materials are quickly pulverized to fine powder.

The Techno Wings Jacketed Mini Pulverizer comprises of a heavy duty Mild Steel / Stainless Steel body, which comprises of a feeding hopper, with a feed regulator slide. The Jacketed Mini Pulverizer body is inlaid with a delivery trough attached at the bottom, with a delivery trough attached at the discharged end. The rotor & beater are mounted on shaft, running in a ball bearing housing at a speed of 4500-6000 R. P.M. The whole unit is mounted on a strong steel stand.

Construction of Jacketed mini Pulverizer

Main body & frame is made of high quality cast iron/M. S. channel frame, liner of high grade steel casting and bearings are lubricated oil (company supplying the machine without oil) Instead of rubber oil seals metal seals are used for avoiding friction & maintenance, which will occur due to the use of rubber seals.

Operating Principal of Jacketed mini Pulverizer

The flow of material from the Feeding Hopper is regulated by means of a Vertical Adjustable Slide to suit the load indicated by the ammeter. Rotor with four beaters runs in anti-clockwise direction. The swinging beaters pass just beneath the Ratchet Teeth Liner fitted inside the top half of the grinding chamber, leaving a gap of 1/16" between the liner teeth and the tips of the rotating beaters. This cuts the material caught between the liner teeth like a sword with a scissors action at a high speed of 4500 to 6000 RPM. After the required size reduction, the material will pass through the screen fitted inside the lower discharge end of the grinding chamber. No sieving is required, as the appropriate size screen fitted will not allow coarser material to pass through. The air generated in the grinding chamber forces the powder to pass through the screen fitted at the bottom discharge end of the grinding chamber, into a cotton bag attached to the delivery trough below. The dust is collected through the attached balloon fitted on the discharge end. The top closed end of the balloon may be suspended from the roof or a wall of the building. Every half an hour the balloon should be tapped to knock down the dust clogging the pores of the balloon, thus releasing the pressure built-up. The dust falls in the bag below, and thus a dust free operation without wastage of product can be achieved. (When Grinding Wet-Pulpy materials, the balloon should not be used)

Servicing guidelines of Jacketed mini Pulverizer

Lifting up the handle opens the cover of the grinding chamber. The grinding parts can be cleaned with a brush within a couple of minutes and the machine is ready for the next batch of grinding. If required, the grinding chamber can also be washed with water. Remove the cotton bag and the screen, close the cover tightly and start the grinder. Now pour a bucket or two of water into the hopper. The grinding parts will be flushed with the water and cleaned. Continue running the machine for a few more minutes as the draft of the fresh air sucked into the grinder will dry it. The beaters, when worn out, can be removed and reversed by unscrewing the two Allen-screws holding the outside rotor plate. When both the edges are worn out, they can be sharpened on an emery stone and reused as new. When completely worn out, the tips can be re-welded in Manganese Steel, Ground to Size for equal weight and refitted.

Typical Application of Jacketed mini Pulverizer

The techno Wings Mini Pulverizers are widely used for grinding of both dry/wet spices, green chilly, fresh ginger, garlic, fresh fruits, vegetables. These pulverizer machine can also be used as a fruit finisher. The techno wings Mini Pulverizer can also be used for the following dry applications like agricultural chemicals, broken biscuits (hi-fat/low fat), custard powder, coffee, charcoal, dals, dyes & pigments, fillers, henna leaves, herbs, leaves and roots instant foods insecticides and pesticides, kaolin molding powders, pharmaceuticals, plastics, poultry feed & marine feed, resins, sugar (biscuit grade/icing grade), stearates, tea etc

Outstanding Features of Jacketed mini Pulverizer

- Grinding is carried out in a cool atmospheric temperature, which guarantee against thermal degradation of product quality and flavors.
- Effective and Continuous Grinding
- Suitable for Wet-Pulpy and Dry Grinding
- Compact Size
- Dust Free operation. No wastage of product and no pollution hazards

Technical Specifications of Mini Pulverizer

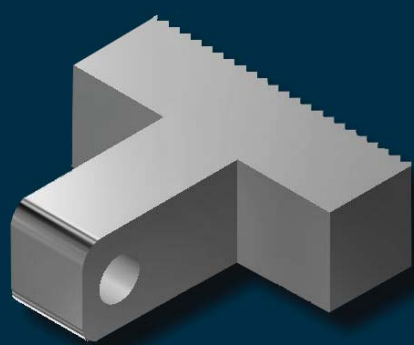
Model No	TW-JMP-4S	TW-JMP-5S	TW-JMP-6S
Chamber Size (Ø= Diameter X width)	Ø 200 mm X 75 mm	Ø 250 mm X 100 mm	Ø 300 mm X 150 mm
Pulverizer's RPM	4500 to 6000	4500 to 6000	4500 to 6000
Motor HP (KW.)	2 HP (1.5 kW.) Or 3 HP (2.2 Kw.)	5HP (3.7 kW.) Or 7.5 HP (5.6 kW)	7.5 HP (5.6 kW.) Or 10 HP (7.5 kW.)
Fineness Range		2 to 100 B.S.S. Mesh	

Standard Accessories of Jacketed Mini Pulverizer

- One number cotton Balloon
- Five numbers of different size holes screen for getting different mesh powders.

Extra Accessories of Jacketed Mini Pulverizer

- Three meter suitable cable along with ampere meter & miniature circuit breaker & Suitable totally enclosed fan cooled three phase or Single Phase Squirrel cage motor {Electricity (Special power can be accommodated): 220/380/415 Volts, 50/60 Hz, 1/3 Phase }
- All contacting parts Stainless steel 304 / 316 can be accommodated



Dynamically balance
interchangeable & reversible joint-
less hardened beater

